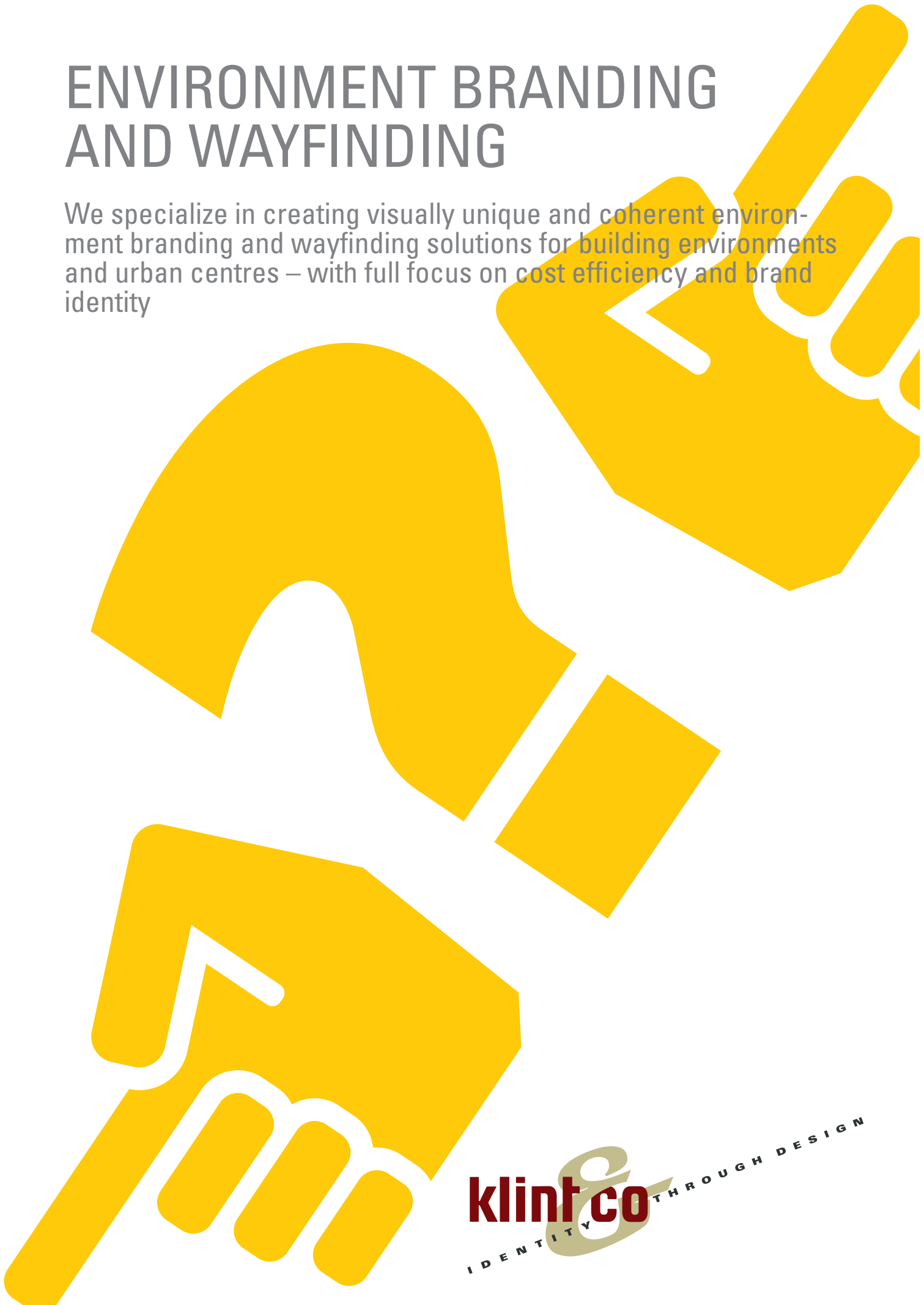
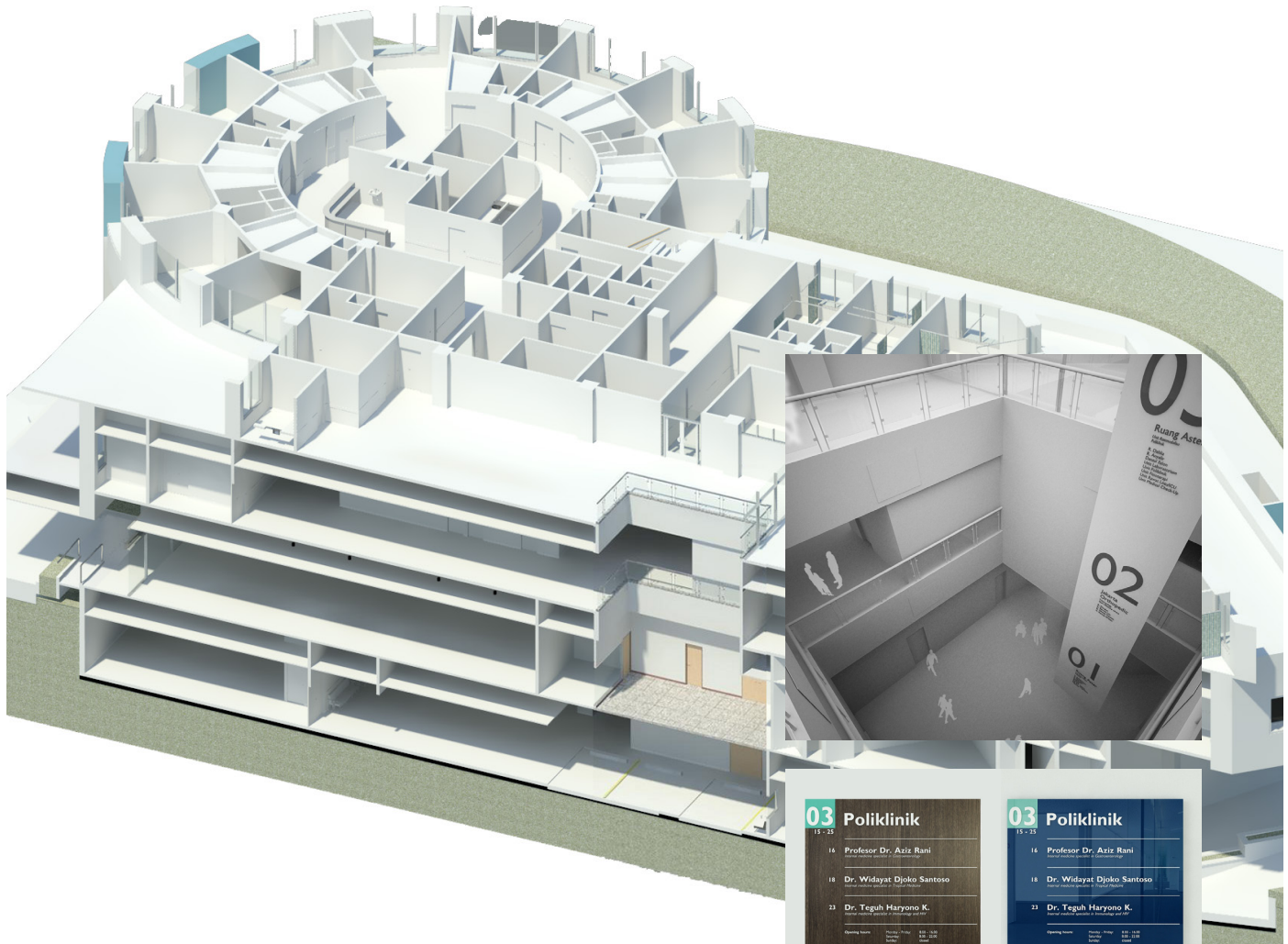


# ENVIRONMENT BRANDING AND WAYFINDING

We specialize in creating visually unique and coherent environment branding and wayfinding solutions for building environments and urban centres – with full focus on cost efficiency and brand identity





*Using 3D in planning and sketching.*

*3D rendering is very useful in situations where the building has not yet been built as well as for testing individual signs colour/material-wise before production. It is a powerful technique ensuring that designs can be completed in the design studio without numerous visits to the construction site.*

### **Environment branding and wayfinding**

Klint & Co is a visual branding and design agency with sales representation in Denmark and Indonesia. As architects and designers we specialize in visual environment branding and wayfinding-solutions - indoor and outdoor - for building environments and urban centres.

As urban centres become denser, the need for user-friendly and coherent wayfinding has never been greater, and our focus is on combining an enjoyable user-experience with a unique visual identity for the building at hand. Furthermore, we have a highly competitive pricing structure that offers you the benefit of international standard wayfinding-solutions at almost local prices.

This brochure is only a short introduction to our wayfinding-services, so please, have a look at our website for more in-depth explanations as well as selected cases.

And always feel free to contact us either by mail or phone - we will be very happy to have a talk with you regarding your wayfinding needs.

### **What we offer**

Our primary clients within wayfinding and environmental branding are:

- Hotels and resorts
- Hospitals and public buildings
- Housing/real-estate
- Commercial/office spaces

Our services cover four stages:

- Feasibility studies\*
- Design
- Wayfinding-concept
- Production (physical/digital)

*\*Also offered as a stand-alone service for clients to use as briefing of external design/production agency.*

Whether your primary needs are physical signage or digital/mobile info-systems, we supply you with a fully integrated design solution where everything 'speaks the same language' visually and as such ensures that your wayfinding becomes a natural extension of you visual brand identity.



*Signage concepts.*

*An important aspect is to ensure that the entire signage-system "speaks the same language" whether being alpha/numeric or pictogram signs. Here the pictograms have been specifically designed to match the company type-face to ensure visual consistency.*



**Instruments and elements**

Our design work covers a broad variety of instruments and elements needed within environment branding and wayfinding:

- Site analysis
- Facade signage
- Signage, outdoor
- Signage, indoor
- Signage systems
- Signage specifications
- Location planning
- Building identification signage
- Regulatory code signage
- Digital signage
- Interactive apps
- Event signage

Related to the above we also develop other branding and marketing instruments, such as *logos, print and publications, 3D and web/mobile design* - all combined into coherent solutions ensuring full consistency throughout all visual and environment branding scenarios.

Though primarily located in Denmark and Indonesia we are always easy to get in touch with and will be happy to meet with you either in person or via mail/skype. So please don't hesitate to contact us for a talk about your wishes and what we can do to help.



# FOR CASES PLEASE CHECK OUT KLINTCO.COM



*Lejlighedstype* **A**

Antal værelser	3
Bruttoareal	94 m <sup>2</sup>
Altan	40 m <sup>2</sup>

Der findes kun  
type i bebygg-  
heden har et  
mindre værel-  
gede skabe. I  
stue.



## CONTACT US:

Klint & Co  
Traverbanevej 8 - DK 2920 Charlottenlund - Denmark  
Phone: +45 20 60 41 90 (Michael Igelsø Hvidt)

Representative Asia  
Jl. Margasatwa no. 62 - ID 12450 Jakarta - Indonesia  
Phone: +62 813 8171 2455 (Henrik Lisby) - Skype ID: henriklisby (jakarta)

[www.klintco.com](http://www.klintco.com) - [info@klintco.com](mailto:info@klintco.com)

